



BROADOAKS PARK

PHASE VI

PLOT 5

SPACIOUS FAMILY HOME
ARRANGED OVER 3 FLOORS

KITCHEN / DINING | LIVING ROOM |
UTILITY ROOM | STUDY |

6 BEDROOMS | 4 BATHROOMS |

PRIVATE PARKING WITH EV CHARGING POINTS |

SOUTH FACING GARDEN | FREEHOLD



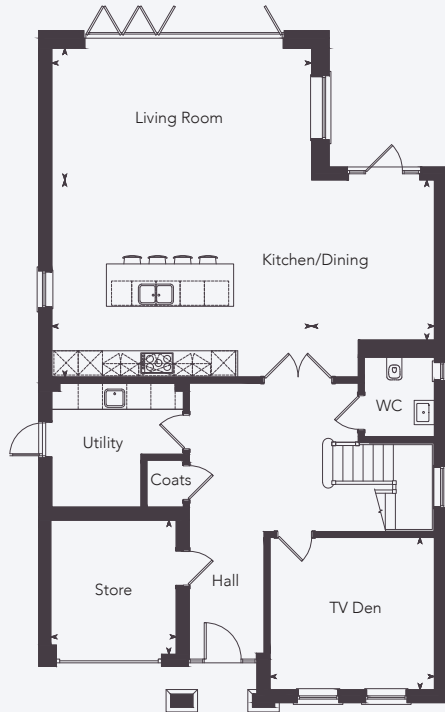
Computer Generated Image

OCTAGON

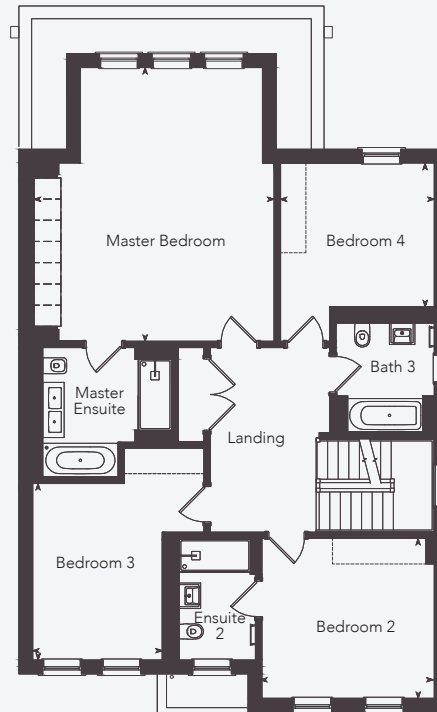
020 8481 7500 | OCTAGON.CO.UK

PLOT 5 AREA

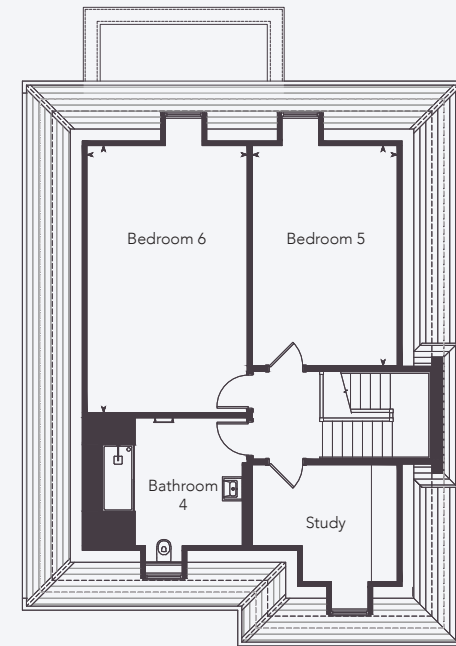
Internal: 344 sq m / 3,698 sq ft



Ground Floor



First Floor



Second Floor

GROUND FLOOR

Kitchen/Dining	9.49m x 8.84m	31'13" x 29'0"
Living Room	6.42m x 3.26m	21'1" x 10'8"
Reception Room	4.06m x 3.76m	13'4" x 12'4"

FIRST FLOOR

Master Bedroom	5.66m x 6.45m	18'7" x 21'2"
Bedroom 2	4.07m x 3.76m	13'4" x 12'4"
Bedroom 3	3.63m x 3.39m	11'11" x 11'1"

SECOND FLOOR

Bedroom 5	3.31m x 5.52m	10'10" x 18'11"
Bedroom 6	4.02m x 6.71m	13'2" x 22'0"

IMPORTANT NOTICE 1. Particulars: These particulars are not an offer or contract, nor part of one. You should not rely on statements in the particulars or by word of mouth or in writing ("information") as being factually accurate about the property, its condition or its value. The seller (s) has any authority to make any representations about the property, and accordingly any information given is entirely without responsibility on the part of the agents, seller(s) or lessor(s). Floorplans not to scale and those shown are approximate measurements only. Exact layout and sizes may vary. Furniture layouts are indicative only. Front image is computer generated.