



# BROADOAKS PARK

PHASE V

## PLOTS 21 & 22

SPACIOUS 2 BEDROOM APARTMENTS  
WITH LARGE WEST FACING TERRACE

PRIVATE GROUND FLOOR ENTRANCE  
2 BATHROOMS | LARGE 40M<sup>2</sup> TERRACE  
PRIVATE PARKING WITH EV POINT  
| LEASEHOLD (999 YEARS)



Computer Generated Image – Plots 21 - 22

22

21

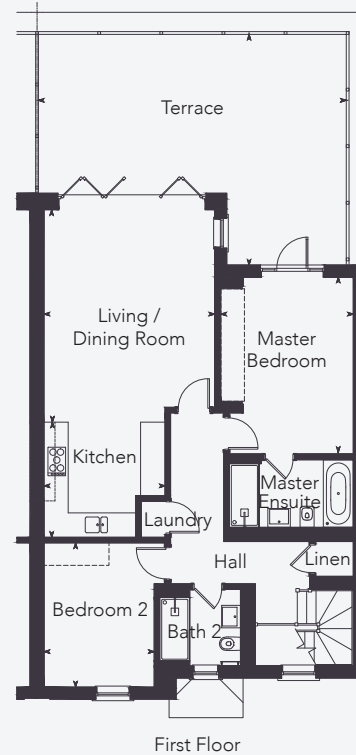


020 8481 7500 | OCTAGON.CO.UK

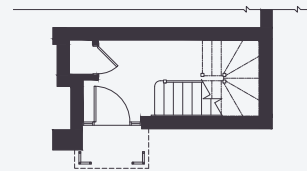
Floorplan shows 21. Plot 22 is handed.

PLOT 21 & 22 AREA

Internal: 107 sq m / 1,155 sq ft  
Terrace: 40 sq m / 431 sq ft



First Floor



Ground Floor

GROUND FLOOR

Kitchen	3.22m x 3.07m	10'7" x 10'1"
Living / Dining Room	5.66m x 4.54m	18'7" x 14'11"
Master Bedroom	4.72m x 3.53m	15'6" x 11'7"
Bedroom 2	3.87m x 2.93m	12'8" x 9'7"
Terrace	8.21m x 6.15m	26'11" x 20'2"

**IMPORTANT NOTICE 1.** Particulars: These particulars are not an offer or contract, nor part of one. You should not rely on statements in the particulars or by word of mouth or in writing ("information") as being factually accurate about the property, its condition or its value. The seller (s) has any authority to make any representations about the property, and accordingly any information given is entirely without responsibility on the part of the agents, seller(s) or lessor(s). Floorplans not to scale and those shown are approximate measurements only. Exact layout and sizes may vary. Furniture layouts are indicative only. Front image is computer generated.